



31 St Stephens Court

Maritime Quarter, Swansea, SA1 1SA

£1,000 PCM



2



2



1



c



31 St Stephens Court

Maritime Quarter, Swansea, SA1

16A

A THIRD FLOOR MARINA APARTMENT with LIFT ACCESS and TWO DOUBLE BEDROOMS & EN SUITE TO MASTER BEDROOM

This South Facing Marina Apartment is within close proximity of the seashore and in an excellent location for access to the CITY CENTRE and Main Transport Routes to the University Bay Campus and Singleton Campus. From the Entrance there is a Fitted Kitchen which is open plan to the Lounge Dining Room where Double Doors open onto a pleasant Decked Balcony. The Kitchen has a Fridge Freezer, Washer Dryer and an Integrated Oven and Gas Hob. The Main Bathroom has an Over Bath Shower and the Master Bedroom has an En Suite Shower Room. Additional benefits include Gas Central Heating

AVAILABILITY IS IMMEDIATE AND FOR VIEWINGS PLEASE CALL SMITHS LETTINGS COUNCIL TAX BAND E

Entrance Hall

9'7" x 4'1" (2.935 x 1.262)

Lounge

15'7" x 13'9" (4.762 x 4.207)

Bathroom

9'5" x 6'0" (2.882 x 1.849)

Kitchen Area

11'0" x 7'10" (3.371 x 2.406)

Bedroom 1

14'10" x 10'1" (4.534 x 3.085)

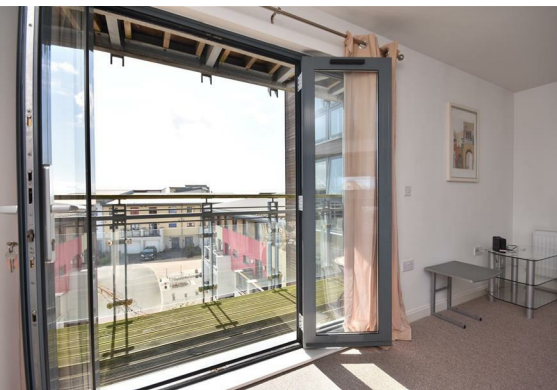
En-Suite Shower Room

7'8" x 4'2" (2.337 x 1.285)

Bedroom 2

12'3" x 10'1" (3.744 x 3.092)



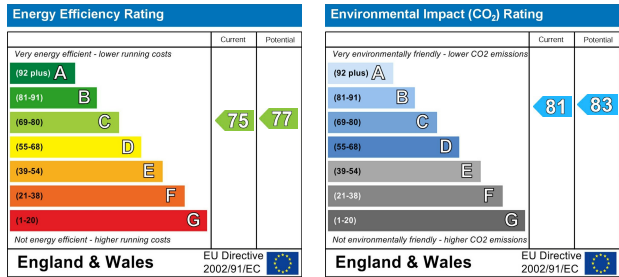


Floor Plan

Area Map



Energy Efficiency Graph



Viewing

Please contact us on 01792 465822 if you wish to arrange a viewing appointment for this property or require further information.

Smiths Homes endeavour to maintain accurate depictions of properties in Virtual Tours, Floor Plans and descriptions, however, these are intended only as a guide and purchasers must satisfy themselves by personal inspection.

Unit 4, 270 Cockett Road, Swansea, SA2 0FN
T: 01792 465822 E: info@smithslettings.com W: www.smithshomes.com

